

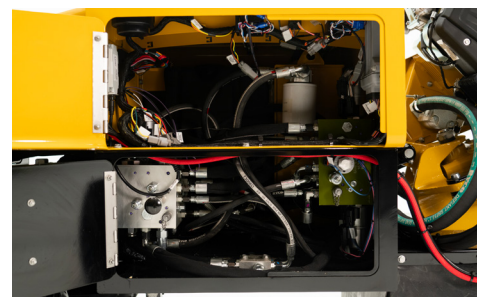
SC402 STUMP CUTTER



MORE POWER, MORE TORQUE. The SC402 is equipped with a 40-hp (29.8-kW) Briggs & Stratton® Vanguard® engine that produces more torque and up to 40% more productivity at the stump compared to its predecessor to help operators grind more stumps in less time and tackle more jobs each day.



FOUR-WHEEL DRIVE. With standard four-wheel drive, the SC402 was built to help prevent ground disturbance and minimize slipping – getting you to the stump and back efficiently and helping leave lawns pristine.



EASE OF MAINTENANCE. Designed for ease of maintenance, the SC402 is all about access and convenience – helping you spend less time in the shop and more time in the field grinding.



OPTIONAL BACKFILL BLADE. When it's time to clean up at the stump, the SC402 was engineered to maximize the containment of chips and get them back in the ground quickly thanks to the optional hydraulic backfill blade.



OPERATOR PRESENCE SYSTEM. The SC402 features the safety innovations you've come to expect from Vermeer – like the capacitive-sensing operator presence system that disengages the wheel when your hands leave the controls.



OPTIONAL REMOTE CONTROL. The SC402 is remote-ready – putting control back in your hands. This provides operators with the flexibility to maneuver the machine and grind stumps comfortably on diverse jobsites.

SC402 STUMP CUTTER

GENERAL WEIGHTS AND DIMENSIONS

Length: 118 in (299.7 cm)

Width (with duals): 50.1 in (127.3 cm)

Width (without duals): 35.5 in (90.2 cm)

Height: 53 in (134.6 cm)

Weight (no blade): 1,950 lb (884.5 kg)

Type: Rubber tire self-propelled

Max ground speed: 65 fpm (19.8 m/min) - 130 fpm (39.6 m/min)

ENGINE

Make and model: Briggs & Stratton® Vanguard® EFI/ETC

Gross horsepower: 40 hp (29.8 kW)

Max torque: 56 ft-lb (76 Nm)

Number of cylinders: 2

Fuel type: gasoline cooling medium: air

CAPACITIES/ELECTRICAL

Fuel tank capacity: 10 gal (37.9 L)

Hydraulic tank: 6.5 gal (24.6 L)

Pump flow at max rpm: 6.4 gpm (16 L/min)

Electrical system: 12 V

CUTTING DIMENSIONS

Cutter wheel straight-line dimension: 47 in (119.4 cm)

Cutter wheel cut above ground: 24 in (61 cm)

Cutter wheel cut below ground: 15 in (38.1 cm)

CUTTER WHEEL (OPTION #1)

Tooth style: Vermeer cutting system (VCS)

Cutter wheel diameter (without teeth): 20 in (50.8 cm)

Cutter wheel thickness: .5 in (12.7 mm)

Number of teeth: 18

Chip containment: 7.5 ft³ (.2 m³)

CUTTER WHEEL (OPTION #2)

Tooth style: Yellow Jacket™ cutting system

Cutter wheel diameter (without teeth): 17 in (43.2 cm)

Cutter wheel thickness: .5 in (12.7 mm)

Number of teeth: 20

Chip containment: 7.5 ft³ (.2 m³)

OPTIONS

Hydraulic front blade

Extended service coverage

Special paint

Planned maintenance

Vermeer Confidence Plus® asset protection program

Remote Control

NOTES:

Vermeer Corporation reserves the right to make changes in engineering, design and specifications; add improvements; or discontinue manufacturing at any time without notice or obligation. Equipment shown is for illustrative purposes only and may display optional accessories or components. The productivity rates stated herein were obtained during corporate testing under controlled conditions and are provided for informational purposes only. Productivity rates obtained during operation will vary based upon your conditions, maintenance, operator experience, site preparation and many other factors. Please contact your local Vermeer dealer for more information on machine specifications. Vermeer, the Vermeer logo, Equipped to Do More, Yellow Jacket and Vermeer Confidence plus are trademarks of Vermeer Manufacturing Company in the U.S. and/or other countries. Briggs & Stratton and Vanguard are trademarks of Briggs & Stratton Corporation. © 2025 Vermeer Corporation. All Rights Reserved. Printed in the U.S.A. Please recycle.

